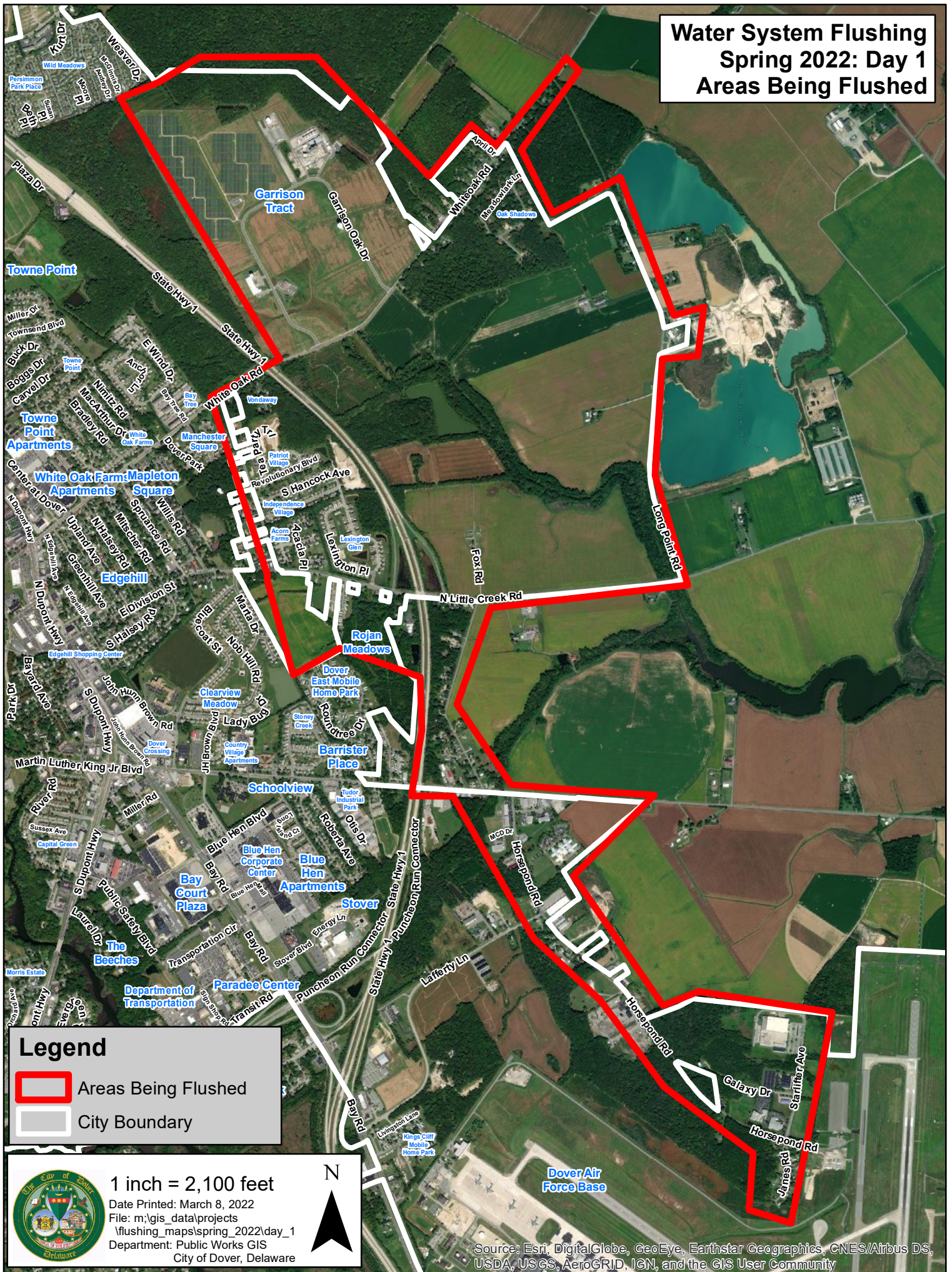


Water System Flushing Spring 2022: Day 1 Areas Being Flushed



Legend

- Areas Being Flushed
- City Boundary



1 inch = 2,100 feet

Date Printed: March 8, 2022
File: m:\gis_data\projects
flushing_maps\spring_2022\day_1
Department: Public Works GIS
City of Dover, Delaware



Source: Esri, DigitalGlobe, GeoEye, Earthstar Geographics, CNES/Airbus DS, USDA, USGS, AeroGRID, IGN, and the GIS User Community